

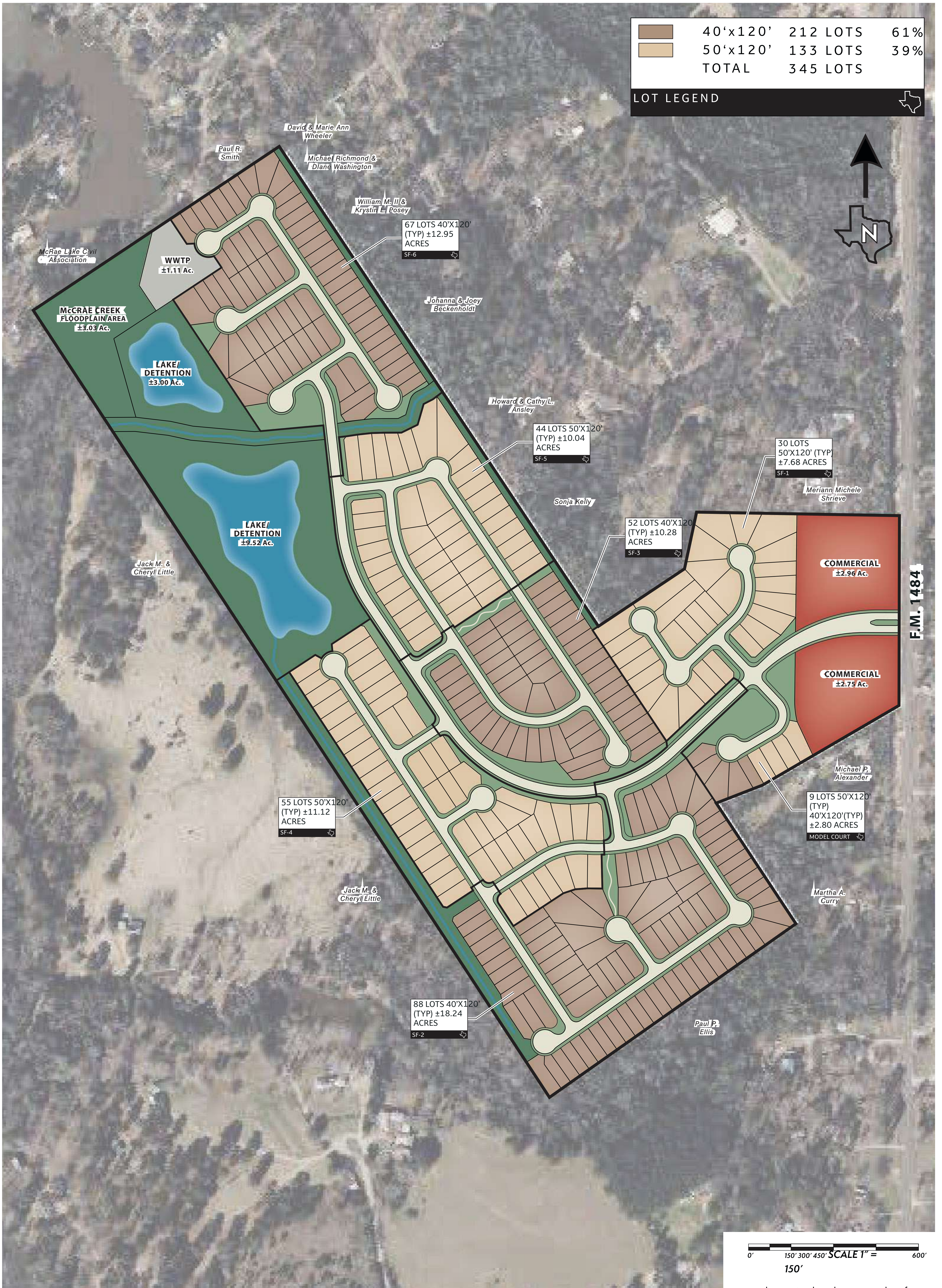
	40'x120'	212 LOTS	61%
	50'x120'	133 LOTS	39%
	TOTAL	345 LOTS	

**LOT LEGEND** 



THIS PLAN IS SOLELY AN ARTIST'S REPRESENTATION FOR PRESENTATION PURPOSES ONLY AND IS NOT FOR COMPUTATION OR CONSTRUCTION PURPOSES. THE INFORMATION PROVIDED WITHIN SHOULD BE CONSIDERED A GRAPHIC REPRESENTATION TO AID IN DETERMINING PLAN COMPONENTS AND RELATIONSHIPS AND IS SUBJECT TO CHANGE WITHOUT NOTICE. ALL PROPERTY BOUNDARIES, EASEMENTS, ROAD ALIGNMENTS, DRAINAGE, FLOOD PLAINS, ENVIRONMENTAL ISSUES AND OTHER INFORMATION SHOWN IS APPROXIMATE AND SHOULD NOT BE RELIED UPON FOR ANY PURPOSE. NO WARRANTIES, EXPRESS OR IMPLIED, CONCERNING THE ACTUAL DESIGN, ACCURACY, LOCATION, AND CHARACTER OF THE FACILITIES SHOWN ON THIS PLAN ARE INTENDED.



**MAJESTIC DEVELOPERS**

a schematic development plan for  
**WOODHAVEN**  
 ±97.32 ACRES OF LAND  
 prepared for  
**MAJESTIC DEVELOPERS**

29 SEPTEMBER 2023